

Need a Mortgage in principle
to make offers? Call us now
for quick assistance!
0121 775 0101



Do you need to sell?
Start your journey now!
Call us we can help.
0121 775 0101



SCAN FOR MORE INFO
SIZE - 840 Sq Ft
TENURE - Freehold
COUNCIL TAX - Solihull Metropolitan Borough Council - C
BROADBAND - Upload Max 1000Mbps Download Max 1800Mbps
MOBILE SERVICES - EE - 82% Three - 84% O2 - 80% Vodafone - 77%
EPC - TBC
PARKING - For at least 4 Cars
FLOODRISK - Very Low
SERVICES - Mains
COVENANTS - N/A

42 Wherretts Well Lane

Solihull, B91 2SD
Offers in the Region of £375,000

This delightful semi-detached house offers a perfect blend of character and modern living. This home is tastefully presented and extended to meet modern needs, making it a wonderful opportunity for small families or couples seeking a blend of comfort and style in a desirable location.

FEATURES

- Characterful Semi-Detached Property
- Lounge with Log Burner
- Extended Kitchen/Dining/Family Room with Bi-Fold Doors
- Second Kitchen Area
- Principal Dual Aspect Double Bedroom
- Second Single Bedroom
- Modern Bathroom
- Private Rear Garden
- Driveway Parking for up to Four Vehicles
- Convenient Location

Are you an investor
interested in expanding your
portfolio?

Call 0121 775 0101 to provide your investment criteria for alerts.



SCAN TO **VIEW OUR**
WEEKLY FILMS &
SUBSCRIBE

Sneak Peeks

Every week, we unveil "Sneak Peeks," a feature showcasing exclusive properties before they hit Rightmove and other platforms.

The Landlord Club

Join our Landlord Club for weekly updates on legislation, market trends, and our Letting Director's 'Investment Pick of the Week' for optimal ROI.

HTSPMD

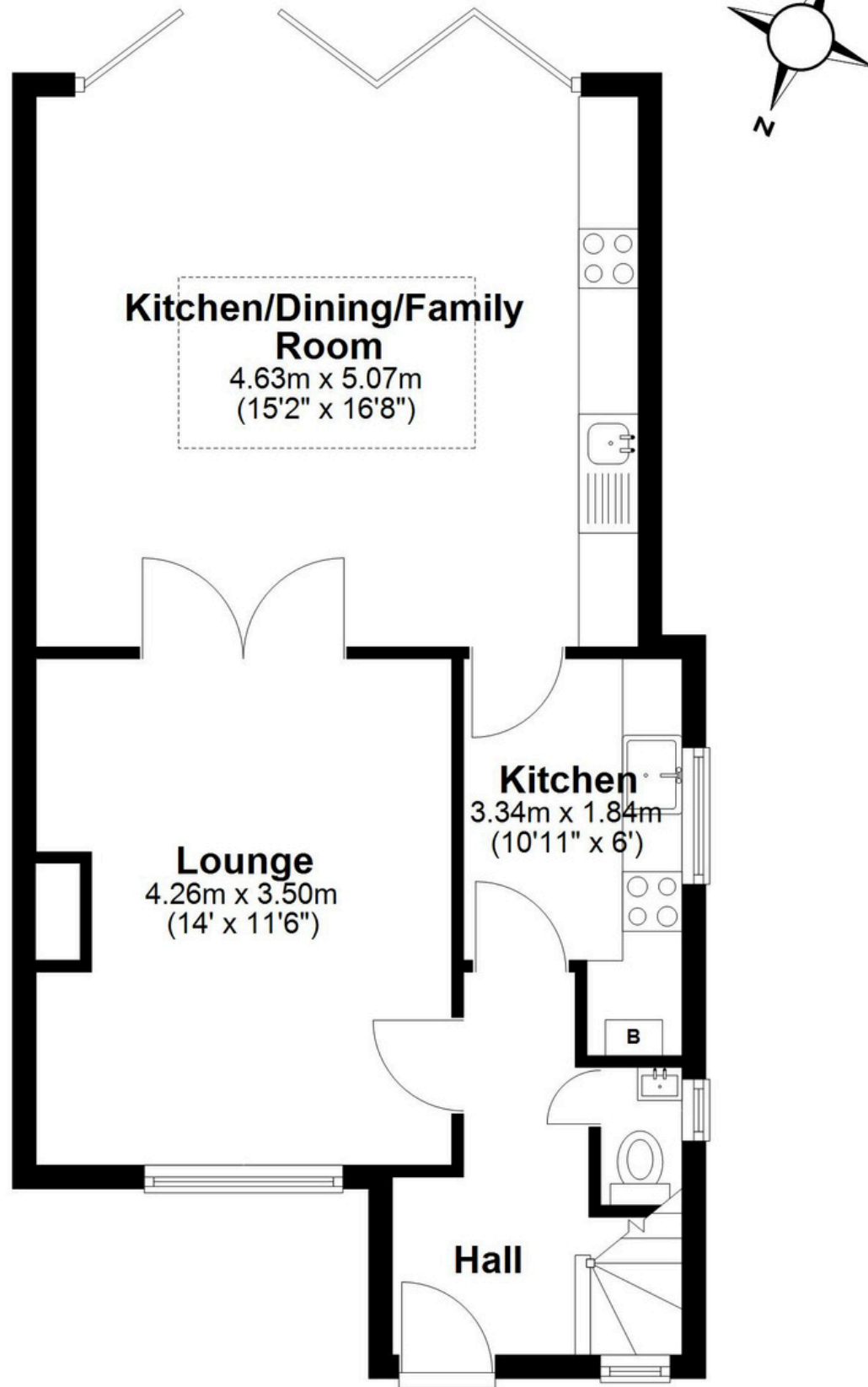
Tune into 'How's The Solihull Property Market Dom' weekly for a quick, insightful snapshot of the market.

The Mortgage Update

Get weekly insights and the best deals with our Mortgage Update, your shortcut to navigating the complex mortgage landscape confidently.

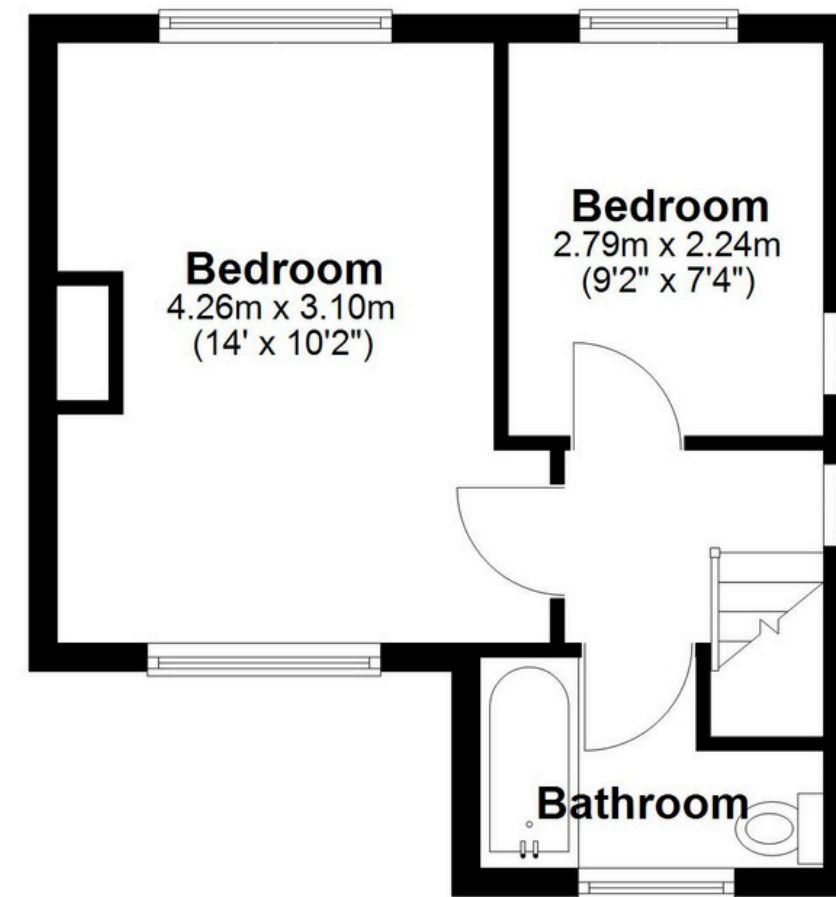
Ground Floor

Approx. 51.0 sq. metres (549.5 sq. feet)



First Floor

Approx. 27.1 sq. metres (291.3 sq. feet)



Total area: approx. 78.1 sq. metres (840.8 sq. feet)

This floor plan is for illustration purposes only, this is not intended to be a measured/scaled survey or comply with RICS guidelines. All measurements (including total floor area) openings, orientation and floor area are approximate. No details are guaranteed, they cannot be relied upon for any purpose and do not form part of any agreement. A party must rely upon its own inspection(s). No responsibility is taken for any error, omission, or mis-statement.

Plan produced using PlanUp.